

John Hartland, MCABE, I Eng.
Registered Building Inspector

MEADS END, DUKES DRIVE, EASTBOURNE, BN20 7RU

F/234/1556

Wednesday, 16 April 2025



OBSERVATION 1



OBSERVATION 2



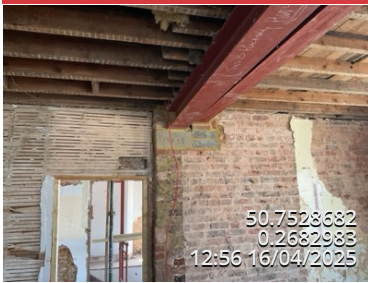
OBSERVATION 3



OBSERVATION 4



OBSERVATION 5



OBSERVATION 6



OBSERVATION 7



OBSERVATION 8



OBSERVATION 9



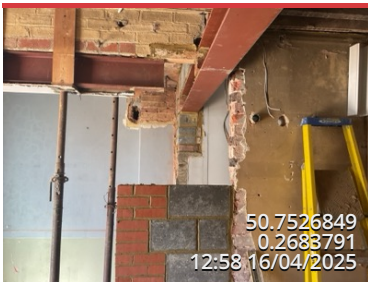
OBSERVATION 10



OBSERVATION 11



OBSERVATION 12



OBSERVATION 13

OBSERVATION 14

All steelwork in place (except 2 storey column, new stair trimming and porch steel) and appears as design.